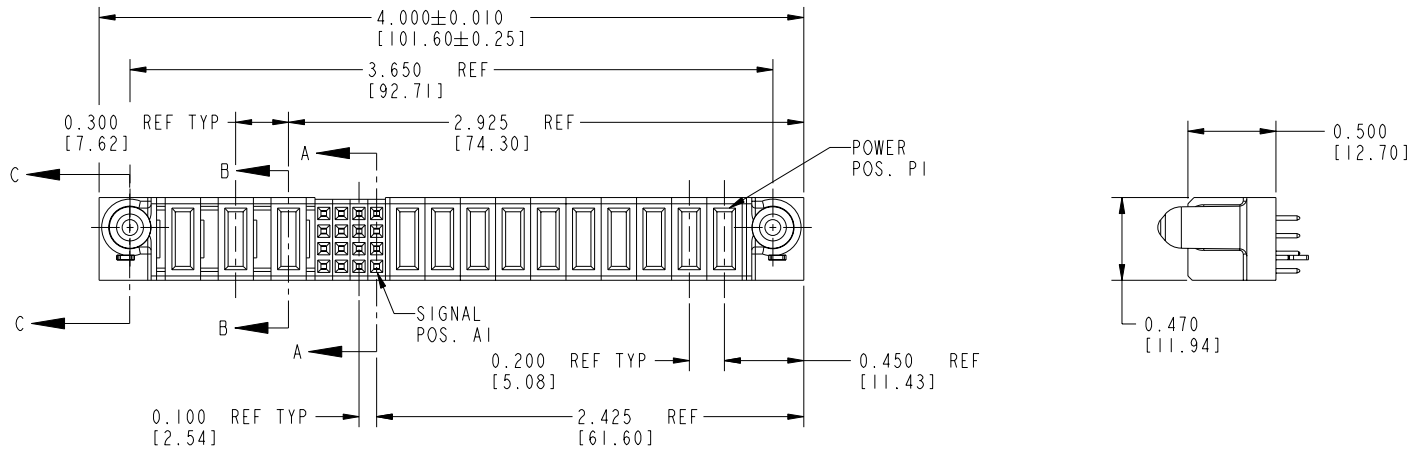
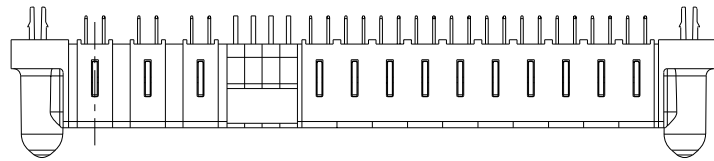


Tous droits strictement réservés. Reproduction ou communication a des tiers interdite sous quelque forme que ce soit sans autorisation écrite du propriétaire. Propriété de c FCI. Droits de reproduction FCI.

All rights strictly reserved. Reproduction or issue to third parties in any form whatever is not permitted without written authority from the proprietor. Property of FCI. Copyright FCI.

PRODUCT No.	ROWS	POWER			SIGNAL			POWER										E1		
		E2	P13	P12	P11	4	3	2	1	P10	P9	P8	P7	P6	P5	P4	P3		P2	P1
51940-003-- NOTE:2	D C B A																			



CODE	DIM "M" MATING LENGTH	DIM "T" TAIL LENGTH	CONTACT TYPE
E	N/A [N/A]	0.135 [3.43]	SIGNAL
PA	0.042 [1.07]	0.135 [3.43]	POWER
PD	0.092 [2.34]	0.135 [3.43]	POWER
HA	N/A [N/A]	N/A [N/A]	HOLD-DOWN

mat'l code				SEE NOTE 1		tolerances unless otherwise specified		CUSTOMER		 www.fciconnect.com	
ltr	ecn no.	dr	date	linear	.xx±.01/0.X±0.3	COPY		projection		title	
A	V12519	JWS	11/1/01		.xxx±.005/0.xxx±0.13					10P + 16S + 3ACP	
B	DG05-0418	CS	10/25/05	angles	.xxx±.0020/.xxx±.051			INCH/MM		VERTICAL SOLDER RECEPTACLE	
C	DG05-0508	CS	11/28/05	dr	0°±2°			scale		product family	
				enr	J. SHAFFER 11/1/01			1:1		PwrBlade	
				chr	E. TREECE 11/1/01			A		code	
				appd	E. TREECE 11/1/01					213	
sheet index	revision sheet	C	C							sheet 1 of 3	
		1	2							cage code	
										22526	

Pro/E

PDM: Rev:C

STATUS:Released

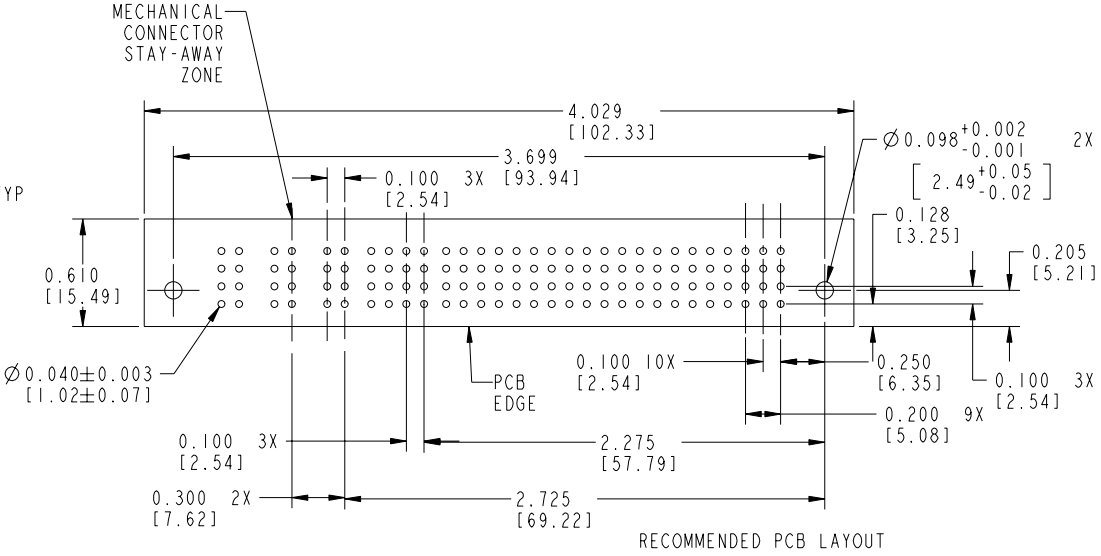
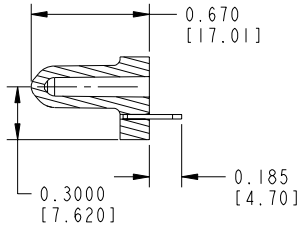
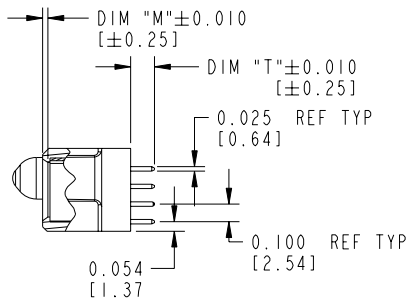
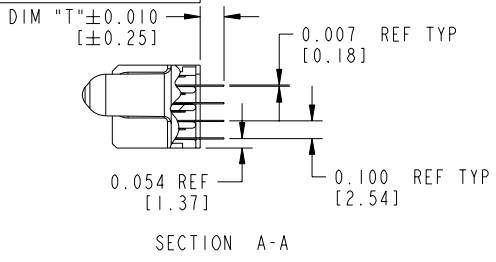
Printed: Aug 14, 2007

Tous droits strictement réservés. Reproduction ou communication a des tiers interdite sous quelque forme que ce soit sans autorisation écrite du propriétaire. Propriété de c FCI. Droits de reproduction FCI.

All rights strictly reserved. Reproduction or issue to third parties in any form whatever is not permitted without written authority from the proprietor. Property of FCI. Copyright FCI.

FCI

PRODUCT NUMBER
51940-003_--
NOTE: 2



mat'l code		SEE NOTE 1		tolerances unless otherwise specified		CUSTOMER		FCI		www.fciconnect.com	
ltr	ecn no.	dr	date	linear	.xx±.01/0.X±0.3	COPY		projection	title 10P + 16S + 3ACP VERTICAL SOLDER RECEPTACLE		
C				angles	.xxx±.005/0.xx±0.13	INCH/MM		product family	PwrBlade	code	213
				dr	.xxx±.0020/.xxx±.051	1:1		size	51940-003	sheet	2
				enr	0°±2°			scale			
				chr	J. SHAFFER 11/1/01						
				appd	E. TREECE 11/1/01						
					E. TREECE 11/1/01						
sheet index	revision sheet										

cage code 22526

Pro/E

PDM: Rev:C

STATUS: Released

Printed: Aug 14, 2007

Tous droits strictement réservés. Reproduction ou communication à des tiers interdite sous quelque forme que ce soit sans autorisation écrite du propriétaire. Propriété de c FCI. Droits de reproduction FCI.



All rights strictly reserved. Reproduction or issue to third parties in any form whatever is not permitted without written authority from the proprietor. Property of FCI. Copyright FCI.

PRODUCT NUMBER
51940-003_
NOTE: 2

CONNECTOR NOTES:

- ① HOUSING MATERIAL: UL 94 V-0 GLASS FILLED HIGH TEMP THERMOPLASTIC
POWER CONTACT MATERIAL: COPPER ALLOY
SIGNAL CONTACT MATERIAL: COPPER ALLOY
- 2. PLATING:
 51940-003 Singal Pin: 30u"/0.76um Au OVER 50u"/1.27um Ni ON THE CONTACT AREA,
 AND 100u"/2.54um SnPb PLATING OVER 50u"/1.27um Ni ON THE TERMINATION SECTION.
 Power Pin: 30u"/0.76um Au OVER 50u"/1.27um Ni ON THE CONTACT AREA,
 AND 100u"/2.54um SnPb PLATING OVER 50u"/1.27um Ni ON THE TERMINATION SECTION.

 51940-003LF Singal Pin: 30u"/0.76um Au OVER 50u"/1.27um Ni ON THE CONTACT AREA,
 AND 78u"/2.00um Sn PLATING OVER 50u"/1.27um Ni ON THE TERMINATION SECTION.
 Power Pin: 30u"/0.76um Au OVER 50u"/1.27um Ni ON THE CONTACT AREA,
 AND 78u"/2.00um Sn PLATING OVER 50u"/1.27um Ni ON THE TERMINATION SECTION.

PART NUMBER 51940-003LF MEETS EUROPEAN UNION DIRECTIVE AND OTHER COUNTRY REGULATIONS AS DESCRIBED IN GS-22-008.

THE HOUSING WILL WITHSTAND EXPOSURE TO 260° PEAK TEMPERATURE FOR 10 SECONDS IN A WAVE SOLDER APPLICATION WITH A CIRCUIT BOARD

- 3. "MANUFACTURER" NAME, P/N, AND DATE CODE TO APPEAR ON THIS SURFACE
- 4. PRODUCT SPECIFICATION GS-12-149

PCB NOTES:

- 5. ALL DIMENSIONS ARE BASIC UNLESS OTHERWISE SPECIFIED.
- 6. ALL THROUGH HOLES ARE LOCATED WITH A TRUE POSITION OF 0.004 [0.10]
- 7. ALL HOLE DIAMETERS ARE FINISHED HOLE SIZE
- 8. Ø0.098[2.49] THROUGH HOLES ARE UNPLATED.
- 9. Ø0.0453±0.0010 [1.151±0.025] DRILLED HOLES PLATED WITH 0.0003 [0.008] MIN SnPb OVER 0.001 [0.03] TO 0.003 [0.08] Cu PLATING TO ACHIEVE A Ø0.040±0.003 [1.02±0.07] HOLE.

CONFIDENTIAL

mat'l code				3		tolerances unless otherwise specified		CUSTOMER		A FCI		www.fciconnect.com	
ltr	ecn no.	dr	date	linear		COPY		projection		title 10P + 16S + 3ACP			
C				angles						VERTICAL SOLDER RECEPTACLE			
				dr	J. SHAFFER	11/1/01	INCH/MM		product family PwrBlade		code 213		
				enr	E. TREECE	11/1/01	scale 1:1		size		dwg no 51940-003		
				chr	E. TREECE	11/1/01			A		sheet 3		
				appd	E. TREECE	11/1/01							
sheet index	revision sheet												

cage code 22526 4

Pro/E